

# MONEY MANAGEMENT COUNSELORS ANNUAL NEWSLETTER

The choices are always yours to make...because it's never JUST about the money.

## WHAT 25 YEARS OF YOUR DONATIONS MEANS...THE NUMBERS

### CLIENTS

We have served over 3,206 clients

### NUMBER OF SPEAKING ENGAGEMENTS

466

12,209 people attending

### TOP ISSUES OVER 25 YEARS

- Credit Card Debts
- Foreclosure Crisis
- Student Loans
- Life Transitions

### THE FINANCIAL LITERACY IMPROVEMENT RATE

87% over all

### AMOUNT OF DEBT PAID BACK

\$1,699,015

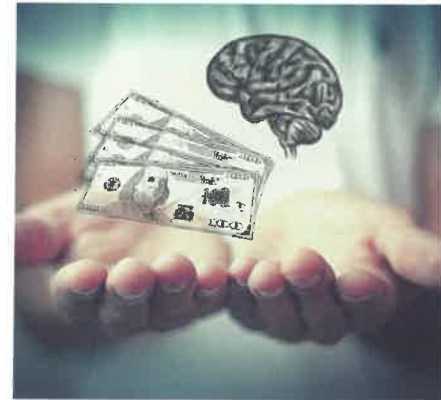


## A Passing of the Baton

"So, it's been a year of transition for MMC and the people we serve. I have to say that the Board and staff planned it very well and now since February 1, I am happily transitioning to semi-retirement. The work and the clients were a joy for me for 24 years. And now, I could not possibly be happier and more relaxed about Leslie's leadership, her commitment to clients and the work she so diligently performs. I have heard many compliments from the community about Leslie, Melissa and their work serving Door and Kewaunee counties. Thank you to this giving community for supporting us over these 25 years of service. Here's to at least 25 more!" Gay Pustaver, former Director 1995-2019

## Our Goals with Future Support

- We hope to expand the existing High School Financial Literacy Education from a one or two day program to a full curriculum-driven week program.
- Expand our Financial Literacy Education to the Middle Schools. Allowing us to wrap both High School and Middle School Financial Literacy Education together.
- Reach clients unable to travel to Sturgeon Bay with continuing our newly launched Sister Bay mobile office. Extend our mobile office to Kewaunee County.
- We hope to expand services online to accommodate our busy clients. Thus allowing us to spend more time on one on one counseling so that we can focus more on complex financial health and wellness issues.



## BOARD OF DIRECTORS

- Craig Asher
- Kay Bidwell Loberg
- Eleanor Dean
- Mike Herlache
- Becky Hirthe
- Bill Kletzien
- Jeff Kleiman
- Sara Sohns
- Amy Sullivan
- Ron Welch
- Deb Whitelaw-Corski



## 7th Annual Wine & Beer Gala - Success!

Our 7th Annual Wine and Beer Trolley Event with Von Stiehl Winery, Ahnapee Brewery and Stone Harbor Resort wouldn't be possible without our generous sponsors and collaborators. Our Annual Event continues to support over 20% of our operating cost so that we may service our community with one on one financial counseling and present literacy programs to our schools. We thank you!



Baird Financial Advisers, Door County Eye Associates, Door County Trolley, ERA Starr Realty, Health Care Visions, Peninsula Title, Pinkert Law Firm, RBC Wealth Management

## What your Donations do...

Our holistic one on one approach of understanding 'it isn't just about the money' enables us to maneuver through both the financial, relationship-related, and emotional aspects of each client. Through our process, our clients gain control over their finances, build financial capability, and financial self-esteem while developing an understanding of their relationship with money and the impact that has on their lives.

Our staff is our product, so your dollars support our time with clients, and the resources we need to facilitate our sessions. We continue to see an increase in returning clients, up 30% to 2018, as the time spent with each.

Our speaking engagements are another area your donations are vital so we can reach people on the front end with financial education. We speak at all the High Schools in Door and Kewaunee County on Budgeting and Student Loans. We participate in local resource fairs, teach at local churches, service groups, businesses and conduct classes and workshops on more specific topics of money management, all thanks to you, our donors.

## A Word from our Clients

How many of us are as fortunate to be told, "You have saved our marriage", or have a client walk in with the feeling of lost hope and despair and later greet you with hugs and tears of joy over their accomplishments. At Money Management Counselors, we are that fortunate.

People come to us in confidence as we are non-judgmental and confidential. We hand out Kleenex and share a tear over a terminal illness, we laugh over life's foibles and commiserate over our children, our parents, and how to juggle the responsibilities of life, all the while we balance a budget, re-figure spending habits, and look at ways to help people become financial whole. We understand it's more than just about the money.

Our clients say it best: "Leslie has helped us feel that money isn't so scary and helped us see the big picture and get a handle on understanding our spending habits." "Always a pleasure to be here." "You are like a Money Whisperer."

Please support financial literacy in our communities with your donation - *Thank you!*

I/We would like to contribute and support the 25th year and counting of continued confidential, non-judgmental service in our communities:

\_\_\_ \$25 \_\_\_ \$250 \_\_\_ \$2500 \_\_\_ other

Check in the amount of \$\_\_\_\_\_ enclosed

Mail to: Money Management Counselors 57 N 12th Ave Suite 104 Sturgeon Bay, WI 54235  
(please make checks payable to: Money Management Counselors or MMC) or PayPal is accepted on our website you do not need a paypal account.

Name or Business: \_\_\_\_\_

Email Address: \_\_\_\_\_

Address: \_\_\_\_\_ Zip: \_\_\_\_\_

Money Management Counselors is a 501(c)(3) nonprofit organization.  
All donations are tax deductible to the fullest extent of the law.

**\$25.00**

PAYS FOR THE ONE TIME COUNSELING FEE FOR A CLIENT

COVERS THE COST FOR A PERSON TO PARTICIPATE IN A 2 HOUR A FINANCIAL WELLNESS WORKSHOP

COVERS THE OVERHEAD COST OF OUR MOBILE OFFICE FOR A DAY

**\$250.00**

PAYS FOR A DAY OF HIGH SCHOOL FINANCIAL LITERACY PROGRAMMING

A PORTION OF A COMMUNITY SPEAKING ENGAGEMENT

COVERS THE COST FOR A PERSON TO PARTICIPATE IN A FULL DAY FINANCIAL WELLNESS WORKSHOP

NEWSLETTERS, MARKETING, WEBSITE MAINTENANCE

**\$2500.00**

COVERS THE COST OF A WORKSHOP

COVERS RE-CERTIFICATIONS FOR COUNSELING SERVICES

SUPPORTS FUTURE PROGRAMMING EXPANSIONS IN THE SCHOOLS

SUPPORTS OUR MOBILE OFFICE LOCATIONS

MAJOR SPONSORSHIP FOR ANNUAL EVENT

SUPPORTS OPERATING COST TO CONDUCT ONE ON ONE COUNSELING SERVICES IN OUR COMMUNITY

